

Honesty is the Best Policy

Ongoing Faculty Conversations about Academic Honesty

- Welcome to our third forum!
- There has been no clear opposition to the policy.
- The Academic Honesty Task Force endorses the policy.
- Please use the feedback forms and put them in the box at the back of the room. We'll use your info to plan future forums.

Honesty is the Best Policy

- *Bellarmine University is an academic community. It exists for the sake of the advancement of knowledge; the pursuit of truth; the intellectual, ethical, and social development of students; and the general well being of society. All members of our community have an obligation to themselves, to their peers and to the institution to uphold the integrity of Bellarmine University. In the area of academic honesty, this means that one's work should be one's own and that the instructor's evaluation should be based on the student's own efforts and understanding. When the standards of academic honesty are breached, mutual trust is undermined, the ideals of personal responsibility and autonomy are violated, teaching and learning are severely compromised, and other goals of the academic community cannot be realized.*

The Policy

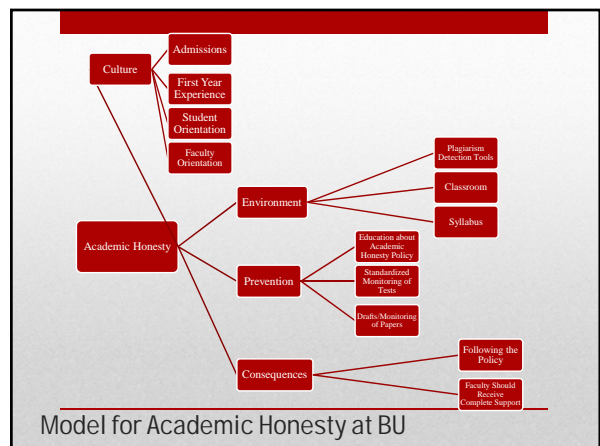
- *Students and faculty must be fully aware of what constitutes academic dishonesty; claims of ignorance cannot be used to justify or rationalize dishonest acts. Academic dishonesty can take a number of forms, including but not limited to cheating, plagiarism, fabrication, aiding and abetting, multiple submissions, obtaining unfair advantage, and unauthorized access to academic or administrative systems or information. Definitions of each of these forms of academic dishonesty and the associated penalties are provided in the Academic Honesty section of the most recent edition of the Student Handbook.*
- BU Course Catalog 2009-2011, pg. 42

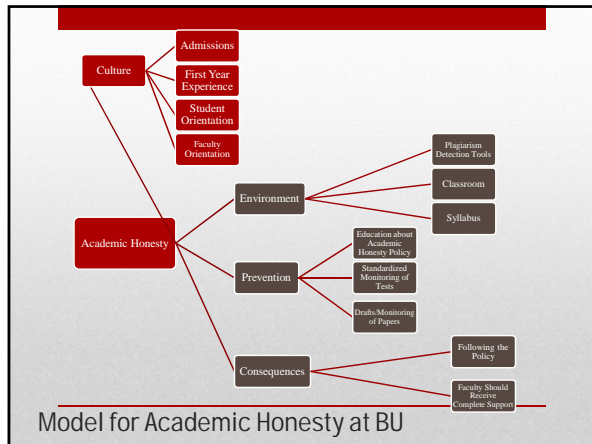
The Policy

- 2006-07: 15
- 2007-08: 17
- 2008-09: 19
- 2009-10: 29
- 2010-11 (as of 2/21/11): 20
- Since 2006-07, only four second offenses reported; two were suspended, and two cases were resolved on appeal.
- Two graduate students have been dismissed from their program upon first offense since 2006-07.

Note: When an incident occurs in which multiple students are involved, each student's involvement is reported as a separate incident.

Current Stats





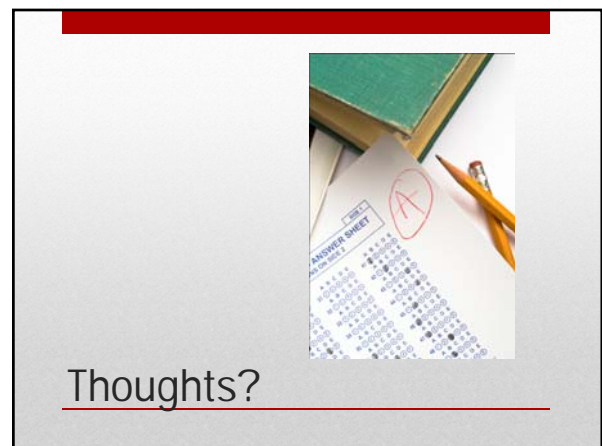
BEST PRACTICES FOR FOLLOWING THE POLICY

I caught a student cheating. Now what do I do?

- **Talk with an experienced colleague or your department chair.***
 - Faculty may consult with the Director of Academic Operations about the process, but s/he is not able to share information about prior offenses due to privacy concerns.
 - **Contact the student to notify him/her that you would like to discuss a problem with his/her assignment.***
 - Faculty may also inform students via email of issues regarding academic honesty, which can be helpful for record-keeping.
- Best Practices**
- (*comes from BU policy)
(**adapted from the Tools for Teaching website <http://teaching.berkeley.edu/bgl/prevent.html> featuring information from the book *Tools for Teaching* by Barbara Gross Davis; Jossey-Bass Publishers: San Francisco, 1993).



- **When you meet with the student, objectively explain the reason that you cannot evaluate the student's work* (recall that our surveys indicated a significant gap between faculty and students' respective understanding of academic honesty).**
- Note: You may request that your dean, department chair, or another faculty member join you for this meeting.***
- **Stay calm and try not to engage emotionally in the situation.**
 - **Make it clear that you have no interest in hearing about any prior violations and experiences; you will make your decision based on this incident.**
- Best Practices**



- Give the student the opportunity to respond.*
- If the student denies wrongdoing, engage him or her in discussion about specific parts of the test or paper (definitions, concepts, analysis, or interpretations).**
- Inform the student of your decision regarding his/her grade for this incident (the faculty member has the option to fail the student for either the assignment or the class*).

Best Practices



Thoughts?

- **Be prepared for the student to be upset****

Note: In the rare case that the student is extraordinarily upset, and the incident seems to be a symptom of a much larger emotional or mental issue for the student, it may be appropriate to recommend that the student visit the counseling center.

- **Document the incident (include dates, facts, and conversations) in an unbiased way for inclusion in your records.**
- **Report the incident to your dean (if you haven't already), the dean of the college/school of the student's major, and the AVPA.***

Best Practices



Thoughts?

- You are not obligated to discuss further consequences with the student. The Office of Academic Affairs will contact the student.
- If it is the first offense, the professor may choose to fail the student for the assignment (in whatever manner s/he deems appropriate based on standard practice and the syllabus) or fail the student for the course.
- On the second offense, the student will be suspended from the university for the semester.
- On the third offense, the student will be dismissed.

Following the Policy: What Happens Next



A Word from Faculty Who Have Been Through the Process.....

- If the student appeals the charge of academic dishonesty, s/he must first appeal to the dean.
- A student may then appeal to the Academic Honesty Appeal Board, but an actual hearing will occur only in cases where at least two members of the board believe the student suffered some injustice due to substantive or procedural error.
- Since 2006-07, there have only been three formal appeals, and only two of those have gone to the Appeal Board – in both of those instances there was no hearing.

On the (very) rare
occasion...

- A compilation of resources for prevention, detection tools, and best practices will be distributed to all faculty via email tomorrow.
- Two copies of the booklet *Outsmart the Cheaters Without the Legal Backlash* will be on reserve in the library. Some copies are available in the back.
- Join us for next fall's forum, "*All on the Same (Plagiarized) Page*," when we discuss the confusing gray areas of unintentional plagiarism and improper citation and best practices for handling them.

Thanks for coming!