

EARLY ENTRY MASTER OF ART IN TEACHING

for Science and Mathematics Teachers

JEFFERSON Bellarmine



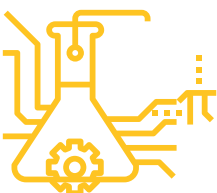
ARE YOU INTERESTED IN A CAREER TEACHING IN SCIENCE OR MATHEMATICS IN MIDDLE OR HIGH SCHOOL (6-12)?

The demand for certified STEM teachers nationally has been rising, and in Kentucky, there is a critical need. Kentucky is still producing significantly fewer certified STEM teachers than needed to fill the vacant middle and high school science and mathematics teaching positions.

To meet this critical need, Bellarmine's Annsley Frazier Thornton School of Education is now offering Early Entry Master of Arts in Teaching (MAT) teacher certification degree program for STEM students. Bellarmine STEM students majoring in Physics, Chemistry, Biology and

Mathematics can add a Masters-level teaching certification to their STEM bachelor's degree in one additional year, earning both their Bachelor's degree in a STEM field and a Teaching Certification in the 5th year.

The Annsley Frazier Thornton School of Education offers a competitively-priced Early Entry MAT program and prides itself on having a 100% pass rate on PRAXIS Principles of Learning & Teaching, which students are required to take for certification to teach in the state of Kentucky. According to the 2017 Knights Get Hired survey, The Annsley Frazier Thornton School of Education is also the department with the highest numbers of graduates working in the field of education (97%) or pursuing continuing studies (3%).



**BACHELOR'S DEGREE
IN A STEM FIELD**



**MASTERS-LEVEL
TEACHING CERTIFICATION**



**FINISH PROGRAM
IN FIVE YEARS**

INTERNSHIP OPPORTUNITIES

The Early Entry MAT program offers experiential learning in STEM education through internships at the Kentucky Science Center and other STEM-related area organizations. Bellarmine students can enroll in EDUC 444 to receive 3 credits for this internship.

5.4%

PROJECTED JOB GROWTH
IN TEACHING JOBS
IN KENTUCKY THROUGH 2026

CAREER OPPORTUNITIES

Bellarmine graduates are highly sought after. They will be leaders in education, serving their communities by helping every child develop to his/her highest potential. Graduates of the Early Entry MAT Program find employment in middle and high school in both public and private schools. Starting salary varies depending on the school district in which one finds employment. The starting salary of a JCPS teacher with a MAT degree is \$48,944 and the average teacher salary of a JCPS teacher is \$63,000, with top earners making almost \$90,000 per year.

GRANT AND LOAN FORGIVENESS

The Kentucky Academy for Equity in Teaching is a renewable loan forgiveness program designed to provide financial support and mentoring to pre-service teachers who are enrolled in, or awaiting admittance to, an approved educator preparation program at an institution of higher education in Kentucky (Bellarmine is an approved preparation program). The KAET loan repayment program is designed to identify and prepare a pool of highly effective, experienced, and diverse educators poised to transition into the teaching profession in Kentucky's public schools. KAET participants receive financial support and training as they are supported and mentored by experienced and effective educators. Eligible candidates may receive up to \$5,000 per semester in loan forgiveness for up to 4 semesters of undergraduate education or up to \$2,500 per semester for the MAT program. The TEACH Grant is a non-need-based program that provides up to \$4,000 per year to students enrolled in an eligible program and who agree to teach as a highly-qualified teacher in a high-need field, at a low-income elementary or secondary school for at least four years within eight years of completing the program for which TEACH Grant was awarded.

RECRUITMENT

Community College 2x2
Education Academies
Bellarmine University

ENGAGEMENT

Science Center
Internship
Maker Fair

PREPARATION

Early-Entry MAT
Certification
PRAXIS Support

PLACEMENT

Job Placement
Tracking

RETENTION

Mentorship
Post-Graduation
PRAXIS Support

FOR MORE INFO ABOUT EARLY ENTRY MAT

» Office of Graduate Admission

p: 1.800.274.4723 x 7200 or 502.272.7200

e: gradadmissions@bellarmine.edu.



**Annsley Frazier Thornton
School of Education**

bellarmine.edu/education