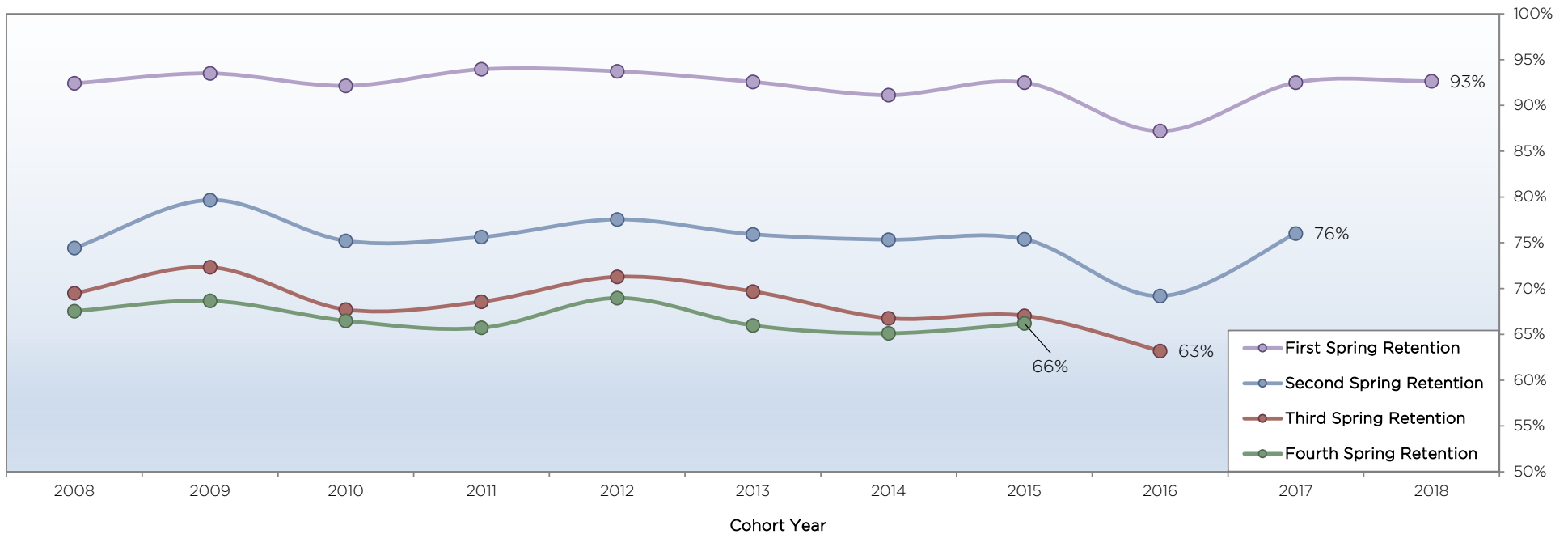


Bellarmine University Office of Institutional Research and Effectiveness

Official Retention Rates for First-Time, Full-Time Fall Cohorts, 2008 - 2018

Entering Fall Class	Cohort Size	First Year		Second Year				Third Year				Fourth Year			
		Fall-to-Spring Retention		Fall-to-Fall Retention		Fall-to-Spring Retention		Fall-to-Fall Retention		Fall-to-Spring Retention		Fall-to-Fall Retention		Fall-to-Spring Retention	
2018	653	605	92.6%												
2017	680	629	92.5%	535	78.7%	517	76.0%								
2016	635 ¹	552	87.2%	458	72.4%	438	69.2%	407	64.3%	400	63.2%				
2015	707	654	92.5%	563	79.6%	533	75.4%	493	69.7%	474	67.0%	472	66.8%	468	66.2%
2014	665 ²	606	91.1%	537	80.8%	501	75.3%	462	69.5%	444	66.8%	434	65.3%	433	65.1%
2013	674	623	92.6%	537	79.8%	511	75.9%	478	71.0%	469	69.7%	462	68.6%	444	66.0%
2012	606	568	93.7%	483	79.7%	470	77.6%	446	73.6%	432	71.3%	421	69.5%	418	69.0%
2011	600 ³	559	93.9%	483	81.2%	450	75.6%	413	69.4%	408	68.6%	398	66.9%	391	65.7%
2010	577 ⁴	528	92.1%	448	78.2%	431	75.2%	400	69.8%	388	67.7%	385	67.2%	381	66.5%
2009	602 ⁵	561	93.5%	497	82.8%	478	79.7%	444	74.0%	434	72.3%	416	69.3%	412	68.7%
2008	567	524	92.4%	441	77.8%	422	74.4%	406	71.6%	394	69.5%	385	67.9%	383	67.5%
Average	632		92.2%		79.1%		75.4%		70.3%		68.5%		67.7%		66.8%



Methodology:

Entering student numbers (full-time traditional and full-time nontraditional) are reconciled with the Colleague cohort code. Regardless of exclusions during IPEDS, the original number above is maintained as it appears in Colleague. However, retention rates are calculated using an adjusted denominator (factoring in the IPEDS-eligible exclusions). See notes below.

- 1. Initial 2016 cohort was 635; adjusted cohort is 633.*
- 2. Initial 2013 cohort was 674; adjusted cohort is 673.*
- 3. Initial 2011 cohort was 600; adjusted cohort is 595.*
- 4. Initial 2010 cohort was 577; adjusted cohort is 573.*
- 5. Initial 2009 cohort was 602; adjusted cohort is 600.*

Students who graduated with a first bachelor's degree in less than four years have been included in the third- and fourth-year retention numbers.