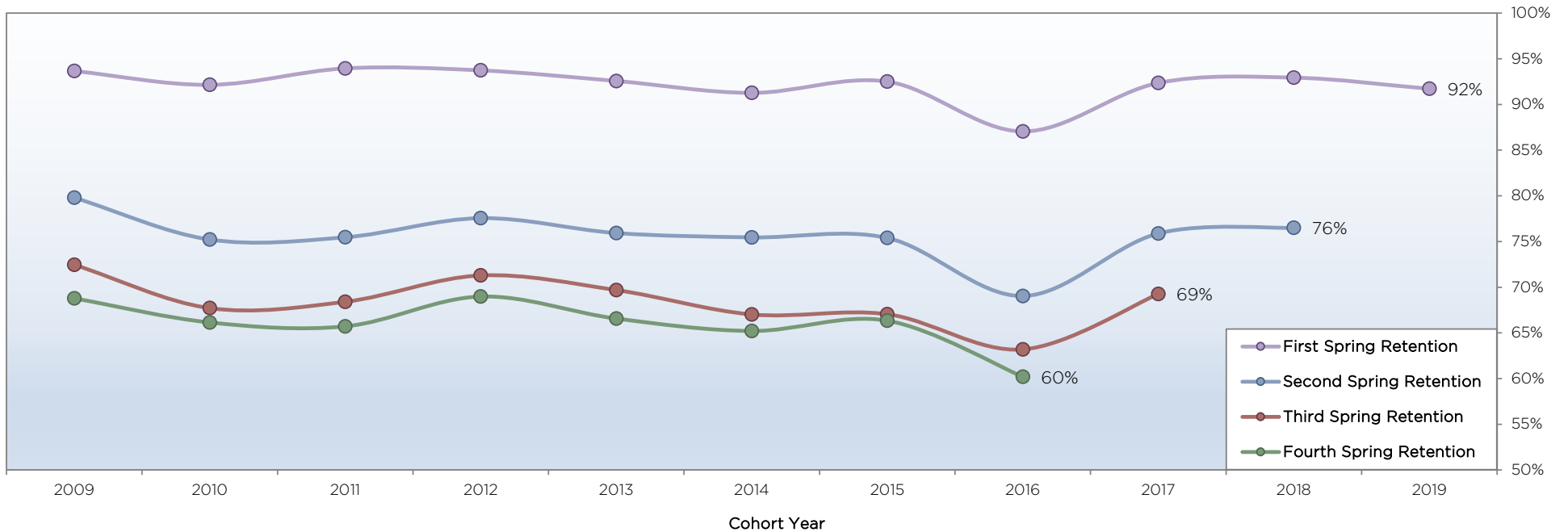


Bellarmine University Office of Institutional Research and Effectiveness

Official Retention Rates for First-Time, Full-Time Fall Cohorts, 2009 - 2019

Entering Fall Class	Cohort Size	First Year		Second Year				Third Year				Fourth Year				
		Fall-to-Spring Retention		Fall-to-Fall Retention		Fall-to-Spring Retention		Fall-to-Fall Retention		Fall-to-Spring Retention		Fall-to-Fall Retention		Fall-to-Spring Retention		
2019	616	565	91.7%													
2018	651 ¹	605	92.9%	518	79.6%	498	76.5%									
2017	680	628	92.4%	535	78.7%	516	75.9%	483	71.0%	471	69.3%					
2016	633 ²	551	87.0%	457	72.2%	437	69.0%	407	64.3%	400	63.2%	388	61.3%	381	60.2%	
2015	707	654	92.5%	562	79.5%	533	75.4%	493	69.7%	474	67.0%	472	66.8%	469	66.3%	
2014	664 ³	606	91.3%	537	80.9%	501	75.5%	457	68.8%	445	67.0%	434	65.4%	433	65.2%	
2013	673 ⁴	623	92.6%	537	79.8%	511	75.9%	478	71.0%	469	69.7%	460	68.4%	448	66.6%	
2012	606	568	93.7%	483	79.7%	470	77.6%	445	73.4%	432	71.3%	421	69.5%	418	69.0%	
2011	595 ⁵	559	93.9%	483	81.2%	449	75.5%	412	69.2%	407	68.4%	398	66.9%	391	65.7%	
2010	573 ⁶	528	92.1%	447	78.0%	431	75.2%	400	69.8%	388	67.7%	385	67.2%	379	66.1%	
2009	599 ⁷	561	93.7%	497	83.0%	478	79.8%	443	74.0%	434	72.5%	416	69.4%	412	68.8%	
Average	636		92.2%		79.2%		75.5%		70.0%		68.3%		67.6%		66.8%	



Methodology:

Entering student numbers (full-time traditional and full-time nontraditional) are reconciled with the Colleague cohort code. Regardless of exclusions during IPEDS, the original number above is maintained as it appears in Colleague. However, retention rates are calculated using an adjusted denominator (factoring in the IPEDS-eligible exclusions). See notes below.

- 1. Initial 2018 cohort was 653; adjusted cohort is 651.*
- 2. Initial 2016 cohort was 635; adjusted cohort is 633.*
- 3. Initial 2014 cohort was 665; adjusted cohort is 664.*
- 4. Initial 2013 cohort was 674; adjusted cohort is 673.*
- 5. Initial 2011 cohort was 600; adjusted cohort is 595.*
- 6. Initial 2010 cohort was 577; adjusted cohort is 573.*
- 7. Initial 2009 cohort was 602; adjusted cohort is 599.*

Students who graduated with a first bachelor's degree in less than four years have been included in the third- and fourth-year retention numbers.